

TIME LINE of a fall semester start of community college...

JANUARY - FEBRUARY

Decide which school

Do the FAFSA (best aid if done by March 2nd)

Do the Chaffee online application

MARCH - MAY

Take assessment tests

Meet with counselor and make education plan

Enroll with priority and do the orientation

JUNE - AUGUST

Submit Bog Waiver

Tour campus, apply for book money, buy books

Start classes!

SEPTEMBER - DECEMBER

Study hard, get tutoring

Check in with counselor

Enroll for Spring Semester

Take Finals

NOVEMBER 30th is CSU and UC application deadline!

CONTACTS

Berkeley City College

EOPS: 510-981-2832
 FYSI Liaison: 510-981-2808
 Financial Aid: 510-981-2807
 Bcc-finaid@peralta.edu

Beyond Emancipation (B:E)

510-667-7694
 beyondemancipation.org

Cal State East Bay

EOP: 510-885-3751
 Renaissance Scholars: 510-885-4426
 Financial Aid:
 Hayward: 510-885-2784
 Concord: 925-602-6700

Chabot College

EOPS: 510-723-6909
 FYSI Liaison: 510-723-7122
 Financial Aid: 510-723-6748
 cc-finaid@chabotcollege.edu

College of Alameda

EOPS: 510-748-2258
 FYSI Liaison: 510-748-2202
 Financial Aid: 510-748-2391
 Coafinancialaid@peralta.edu

FAFSA

800-4FED-AID
 Fafsa.ed.gov

Laney College

EOPS: 510-464-3423
 FYSI Liaison: 510-464-3288
 Financial Aid: 510-464-3414

Las Positas

EOPS: 925-424-1598
 FYSI Liaison: 925-424-1542
 Financial Aid: 925-424-1580
 lpcfinaid@laspositascollege.edu

Merritt College

EOPS: 510-436-2470
 FYSI Liaison: 510-436-2486
 Financial Aid: 510-436-2465

Ohlone College

EOPS: 510-659-6152
 FYSI Liaison: 510-659-6151
 Financial Aid:
 Fremont: 510-659-6150
 Newark: 510-742-2340
 Financial_aid@ohlone.edu

UC Berkeley

EOP: 510-642-7224
 California Independent Scholars
 Network Program: 510-642-6151
 Financial Aid: 510-664-9181

Also leads to great jobs that use your skills!

Check in with your community college about their many CTE programs. They are accredited and eligible for county book money.

SOME EXAMPLES:

- | | |
|------------------------------------|--------------------------------|
| American Sign Language | Electricity/Electronics |
| Apparel Design & Merchandising | Environmental Control Tech |
| Architecture/Engineering | Graphic Arts |
| Art & Communication | Health Professions/Occupations |
| Auto Body & Paint | International Trade |
| Aviation Maintenance Technology | Landscape Horticulture |
| Biological & Environmental Studies | Nursing |
| Business | Nutrition and Dietetics |
| Carpentry | Paralegal Studies – Merritt |
| Child Development | Photography |
| Computer Information Systems | Public Safety |
| Construction Management | Real Estate |
| Cosmetology | Recreation & Travel Studies |
| Culinary Arts | Social Services |
| Dental Assisting Program | Transportation Technology |
| | Welding & Wood Technology |



ALAMEDA COUNTY'S

TEAM – College success takes a team, and your team awaits! #teamwork

directions:

Fill in the blanks with the name of the person who will partner with you, and check the box if you've completed the task. Match the following numbers to the location marker on the reverse side.

- DECIDE**
I've decided to go to _____, because _____
I discussed this with _____ and _____
- APPLY**
Person to help me _____
Computer to use _____
- ASSESSMENT TESTS**
 I have studied.
 I have taken both tests.
Person to help me prepare and schedule _____
- ORIENTATION**
I can ask _____ about the orientation requirement.
 I have completed my school's required orientation
- ENROLL**
Person to help me with this _____

- I've met with a counselor on campus.
- I am eligible to enroll for classes early through priority enrollment.
- TOUR**
Person to go with me _____
- FINANCIAL AID OFFICE**
 I know where it is.
 I've checked in there.
- EOPS/EOP**
Person to help me with application process _____
Person at EOPS/EOP that can continue to help me _____
- I submitted an application to EOPS.
- FYSI LIAISON**
The FYSI Liaison at my school is _____
- HEALTH & WELLNESS CENTERS**
 I've found this center on campus
- DSPS**
 I think I might have a qualifying disability.
 I've made contact with the office.

- ACADEMIC COUNSELING DEPARTMENT**
 I've made an appointment to make an education plan (EOPS/EOP counselors can help with this too).
- FOSTER YOUTH SPECIFIC PROGRAMS**
 I've asked if my school has one.
The contact person is _____
- CARE**
 I've found the CARE office.
- BEYOND EMANCIPATION (B:E)**
My case manager/education specialist _____
 I applied for book money.
- LAWYER**
My lawyer is _____
- CHILD WELFARE WORKER**
My CWW is _____
 I've talked to him or her about my educational goals.
- CASA**
My CASA is _____
 My CASA and I discussed ways he/she can help me with college.
 I don't have a CASA, but will ask my CWW or lawyer about getting one.

- TRANSITIONAL HOUSING STAFF**
My transitional housing program's education specialist/case manager is _____
He or she can help me with _____
- HIGH SCHOOL HELP**
Someone I met in high school who gave me college advice is _____
 I can stay in touch and ask for help with _____
- OTHER SUPPORTIVE ADULTS**
My current or former caregiver, _____, can help me with _____
My relative is helping me with _____
- FAFSA**
Person to help _____
I used this email address _____
I can use the computer at _____
- I submitted the FAFSA.
- I know to do it every year.
#moneyforcollege

- BOG WAIVER**
Person to help _____
 I have submitted this to the financial aid office.
 I have a Ward of Court Letter from my CWW.
- BOOK MONEY**
 I have submitted a Book Money application.
- FEDERAL PELL GRANT**
 I submitted the FAFSA.
- FSEOG**
 I submitted the FAFSA.
- CAL GRANT**
 I have submitted a GPA form by March 2nd.
- CHAFEE GRANT FOR FOSTER YOUTH**
 I submitted the FAFSA.
 I submitted a separate application at www.chafee.csac.ca.gov
- SCHOLARSHIPS**
I will ask _____ for information on where and how to apply for scholarships. #moneyforcollege
 I have applied for at least two.

Map to Higher Education

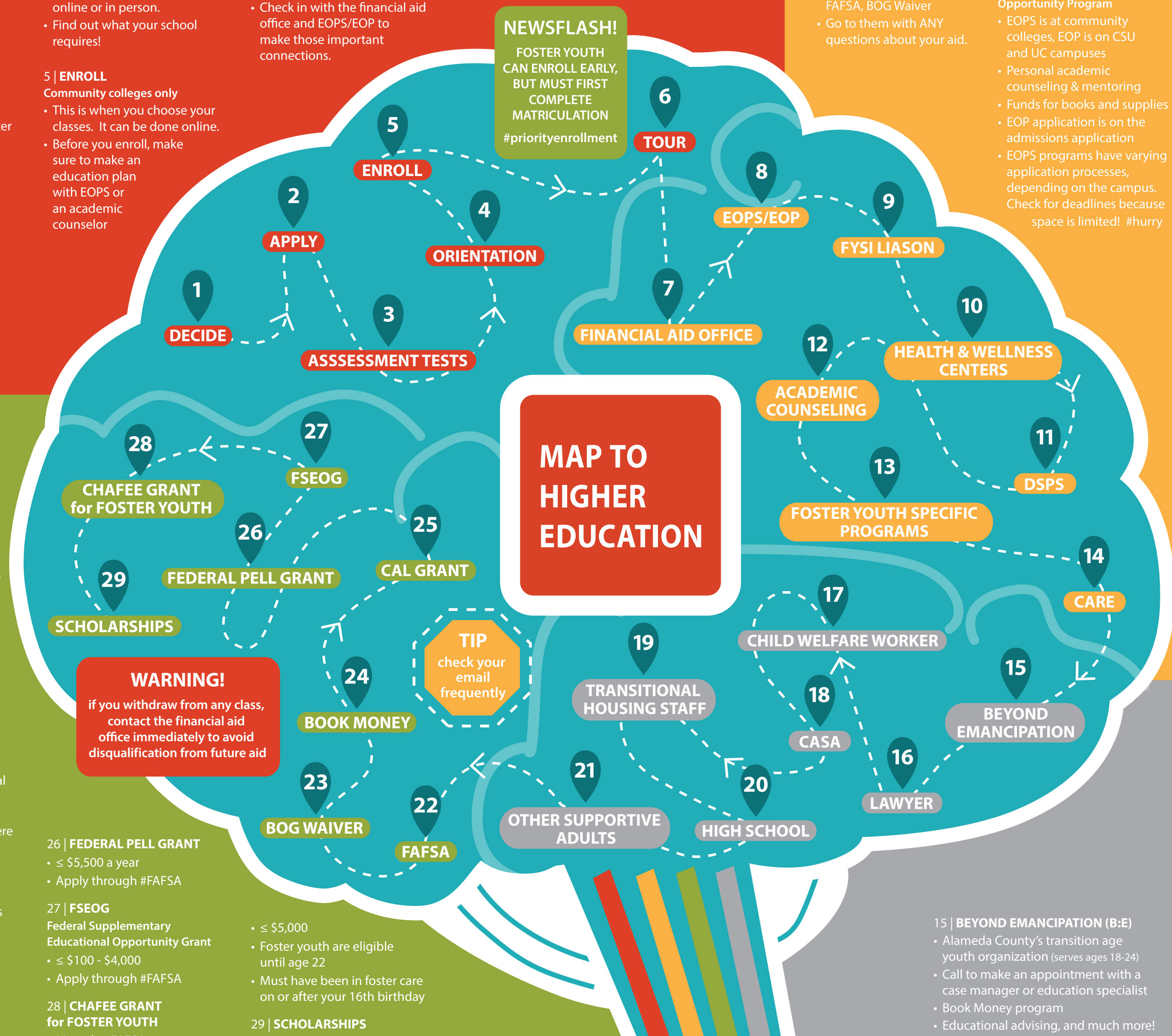
A tool for foster and probation youth, and their team of supporters, to navigate the world of higher education #collegesuccess

MATRICULATION

NEWSFLASH!

FOSTER YOUTH CAN ENROLL EARLY, BUT MUST FIRST COMPLETE MATRICULATION
#priorityenrollment

MAP TO HIGHER EDUCATION



1 | DECIDE
Which school do you want to attend?
• Consider: location, majors offered, class size, services available

2 | APPLY
• For CSU and UC schools, visit websites to access their applications
• For community colleges, go to the school's website and register
• You will receive a username, email account, and password. Use these to fill out the online application

3 | ASSESSMENT TESTS
Community colleges only
• Study! This determines what classes you can take.
• Go to the campus to take assessment tests.
• English and Math are tested.

4 | ORIENTATION
Community colleges only
• You must attend an orientation online or in person.
• Find out what your school requires!

5 | ENROLL
Community colleges only
• This is when you choose your classes. It can be done online.
• Before you enroll, make sure to make an education plan with EOPS or an academic counselor

6 | TOUR
• Go to your campus and find where your classes are ahead of time
• Check in with the financial aid office and EOPS/EOP to make those important connections.

7 | FINANCIAL AID OFFICE
• Check to make sure they have your information, FAFSA, BOG Waiver
• Go to them with ANY questions about your aid.

8 | EOPS/EOP
Extended Opportunity Program Services/Educational Opportunity Program
• EOPS is at community colleges, EOP is on CSU and UC campuses
• Personal academic counseling & mentoring
• Funds for books and supplies
• EOP application is on the admissions application
• EOPS programs have varying application processes, depending on the campus. Check for deadlines because space is limited! #hurry

9 | FYSLIASON
Foster Youth Success Initiative Liaison
• A person on campus who offers specialized support with financial aid, and linkages to other campus resources

10 | HEALTH & WELLNESS CENTERS

11 | DSPTS
Disabled Students Programs & Services
• Extra resources to help disabled students succeed in college.

12 | ACADEMIC COUNSELING
• Counselors on campus that can help you create an education plan
• This is required to be eligible for priority registration at community college
• Make an appointment at least once a year!

13 | FOSTER YOUTH SPECIFIC PROGRAMS
• Some colleges have special programs to support foster youth in college
• To find out if your school has one, ask at the EOPS/EOP office on campus. #morehelpthebetter

14 | CARE
Cooperative Agencies Resource for Education
• Support for parenting students

22 | FAFSA
Financial Aid for Students Application
www.fafsa.ed.gov
• Must be done every year!
• Best to do it between January 1st and March 2nd
• Be sure to mark "yes" if asked if you are/were a "ward"
• Must indicate which schools you're considering
• Call your school's financial aid office to make sure they received it

23 | BOG WAIVER
Board of Governors Fee Waiver
• Waives tuition at Community Colleges
• Turn into your school's financial aid office
• You may need a Ward of Court Letter as proof that you are/were in foster care

24 | BOOK MONEY
• College books are expensive!
• B:E operates Alameda County's Book Money Program. Apply at B:E!

25 | CAL GRANT
• Only eligible if you do #FAFSA by March 2nd
• Must submit a GPA form before March 2nd
• Tract status at www.webgrants4students.org

26 | FEDERAL PELL GRANT
• ≤ \$5,500 a year
• Apply through #FAFSA

27 | FSEOG
Federal Supplementary Educational Opportunity Grant
• ≤ \$100 - \$4,000
• Apply through #FAFSA

28 | CHAFEE GRANT for FOSTER YOUTH
• Must do #FAFSA
• AND a separate application at chafee.csac.ca.gov

• ≤ \$5,000
• Foster youth are eligible until age 22
• Must have been in foster care on or after your 16th birthday

29 | SCHOLARSHIPS
• There are lots of scholarships out there! Ask your support team for leads, and apply! #moneyforcollege

WARNING!
if you withdraw from any class, contact the financial aid office immediately to avoid disqualification from future aid

TIP
check your email frequently